

Prizma® Maintenance Kit

Biennial maintenance kit for

PRIZMA® Controller for Residential/Private Swimming Pools

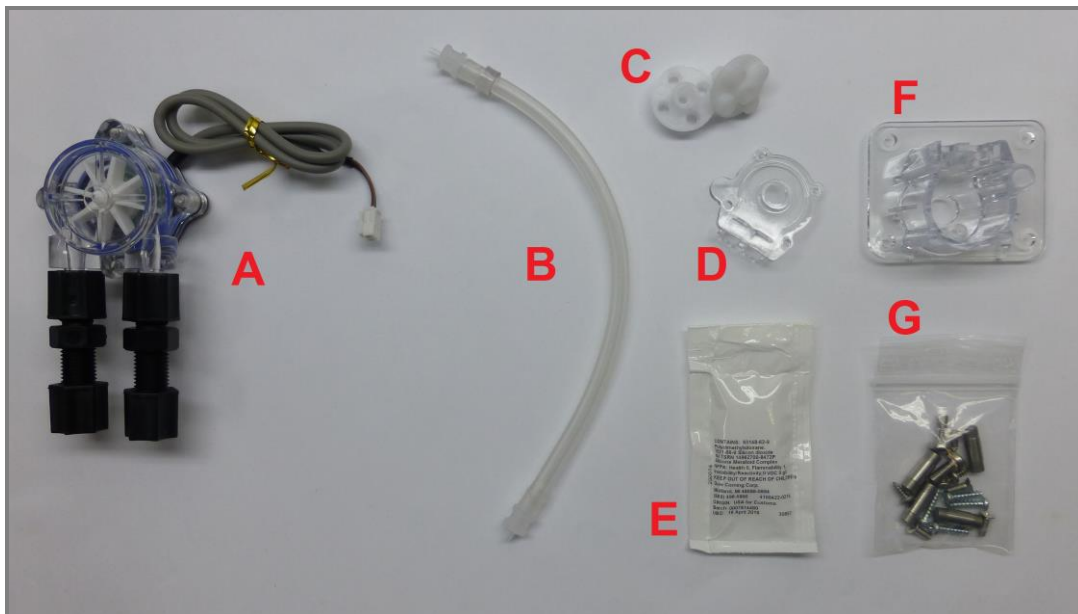
Catalog number: 971-210-4003

Blue I's [Prizma® Controller](#) automatically controls chemical dosing in swimming pools, ensuring a safer and more accurate chemical balance for the pool. The Prizma® is designed to test the chlorine and pH levels of the pool at regular intervals and to automatically operate the chemical pumps to maintain optimal pool chemistry balance.

This **Prizma Maintenance Kit** provides you with all the parts that should be **replaced once every two years (pump and flow switch)** in order to maintain the Prizma®'s reliable and continuous operation over time.

Carefully follow the simple steps below.

1. Parts Included



- A Flow switch
- B Pump tube
- C Rotor base and rotor cover
- D Pump housing cover
- E Grease
- F Pump housing base
- G Spare parts, including: Prizma door screws; pump pins; pump housing cover screws; pump housing base screws



Warning:

Turn water off and disconnect power before beginning replacement of any Prizma® component.

2. Removing the Prizma® Cover

The pump and flow switch are accessed by removing the Prizma® cover.

1. Gently remove the two screw covers on the top corners of the Prizma®, using a small flat-blade screwdriver.
2. Remove the screws.



3. Unlatch and open the cassette door. Remove cassette.



4. Loosen 5 screws as indicated. (No need to remove completely), and close the cassette door.



5. Release the Prizma® cover by pulling carefully at the top corners.

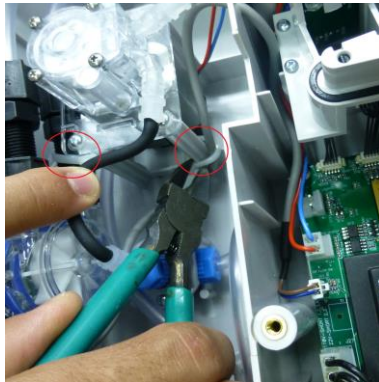


3. Replacing Flow Switch

1. First remove the existing flow switch. Locate and unplug the existing flow switch connector on the electronics card to release flow switch wires. (Marked "INT FLOW SW" on electronics card).



2. Using pliers cut the cable ties holding the flow switch in place (on the plastic posts beneath the pump housing base).



3. Remove the two tubes from the flow switch heads.

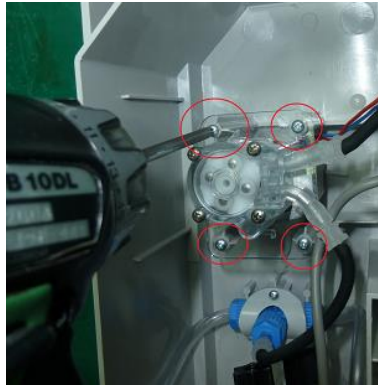


4. **Install the new flow switch [A]** by first securing the two tubes to the flow switch heads.
5. Route the electric cord through the opening to the electronics card and attach the connector (where marked "INT FLOW SW").
6. Secure the flow switch in place using cable ties to attach one of the black plastic connectors to one of the plastic posts beneath the pump housing base, and the electric cord to another post. (See 2 above).



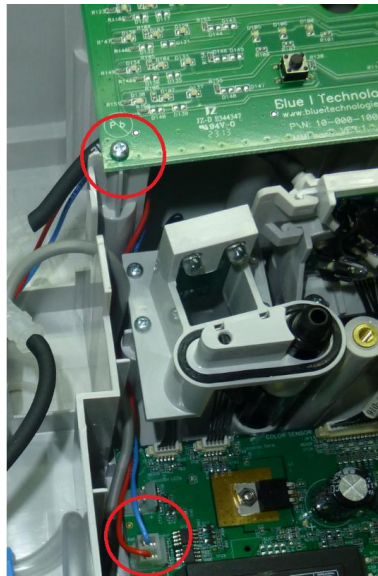
4. Replacing Pump Housing

1. First remove the existing pump housing. Remove the four screws of the pump housing base.



2. Locate and unplug the existing connector on the electronics card to release flow switch wires. (Marked "Water Pump motor" on electronics card).
3. Route the wires out through the opening from the electronics card.

Note: If necessary, loosen the bottom screw of the MMI electronics card and lift the card slightly to make room for the connector to be routed out.

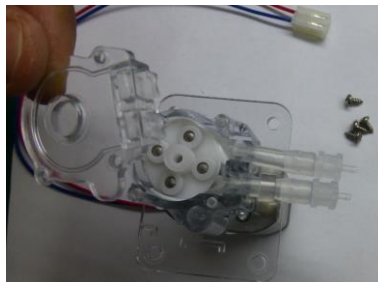


4. Disconnect the two black tubes from the two ends of the pump tube.
5. Lift the pump (with pump motor attached) and remove it to a work surface.

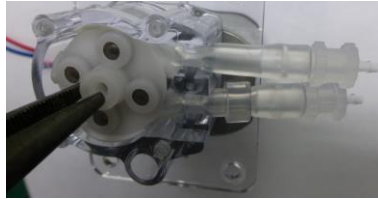


Install the new pump housing:

6. Unscrew and dismantle the existing pump housing cover.



7. With small pliers remove the rotor cover and pump pins.



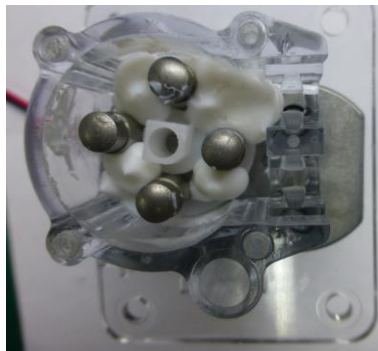
8. Gently lift and remove the pump tube and then lift out the rotor base.
9. Then unscrew the old pump housing base from the motor, to which the new pump housing will be attached.



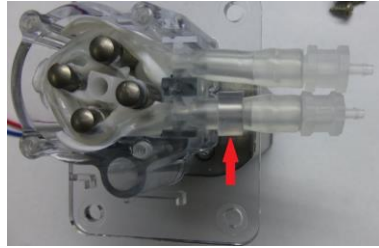
10. Screw the new pump housing [F] onto the motor. (New screws are supplied with the Maintenance Kit.)



11. Proceed to construct the pump **using only new parts** provided in the Maintenance Kit.
12. Insert the rotor base [C] (knobs side down) by fitting the flat side of the center hole on the flat side of the rotor axle.
13. Insert the four pump pins [G] and secure in the depressions of the rotor base. Then apply grease [E] around the pins (cut a corner of the grease sachet to apply).



14. Insert the pump tube [B], making sure that the end with the ring is on the bottom.



15. Apply some grease over the pipe, between the pins.

16. Secure the rotor cover [C] over the pins and then screw on the pump housing cover [D].



17. Reconnect the Prizma's two black tubes to the ends of the pump tube.

18. Route the new pump wires through to the electronics card and plug the new connector on the electronics card where marked "Water Pump motor". **Note:** If the bottom screw of the MMI electronics card was loosened to enable access, be sure to secure it back in place.



19. Screw the pump into place.



5. Replacing the Prizma® Cover

Follow in reverse steps 5-1 in Section 1 above (Removing the Prizma® Cover).

Reconnect the Prizma to its power supply to resume full operation.



www.blueitechnologies.com

Blue I Water Technologies Ltd., 18 Ha'melacha St., Rosh Ha'ayin 4809148, Israel
Tel: +972-9-7680004, Fax: +972-9-7652331, e-mail: info@blueitechnologies.com

Rev 1.1